



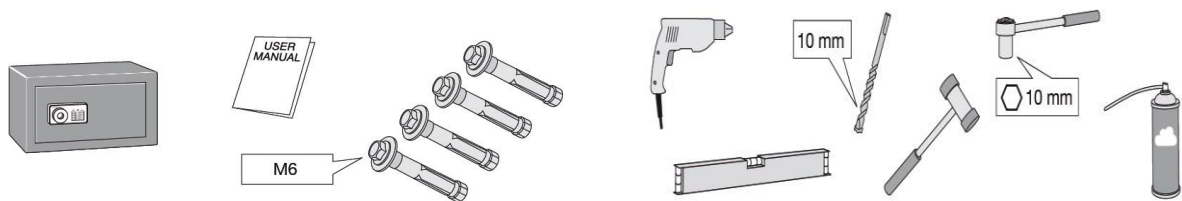
1300 360 127

**SUPPLY
DELIVERY AND INSTALLATION
SERVICE AND REPAIR**

*City Safes has all of your security
requirements covered*

CHUBBSAFES - Elements Water / Earth / Fire Range

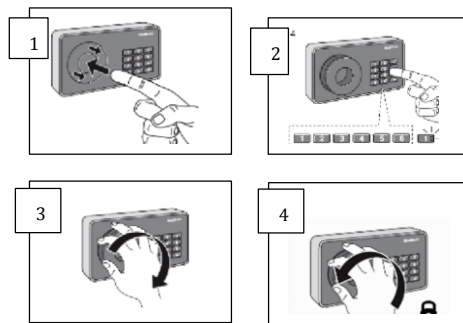
Operating and Changing Instructions



The box contains the following

You will need the following to install your safe.

Opening your safe & Closing your safe – for the first time



1. Press in the centre of the round dial to release the handle (left hand side of the lock. Diagram 1)
2. Press the * button on the bottom left of the PIN pad and you will hear a single beep.
3. Press numbers 1,2,3,4,5,6 and you will see a light on the Number one (1) button light up (Diagram 2)
4. Turn handle to the right (clockwise) to retract the bolts & open the safe door. (Diagram 3)
5. To lock your safe, close the door and turn the handle to the left (anti clockwise. Diagram 4)
6. Push the handle outer rim inwards. Your safe is locked.

SHOWROOM AND HEAD OFFICE

24 Garema Ct,
Kingsgrove, NSW 2208

Ph: (02) 9502 1014

Email: sales@citysafes.com.au

Web: www.citysafes.com.au

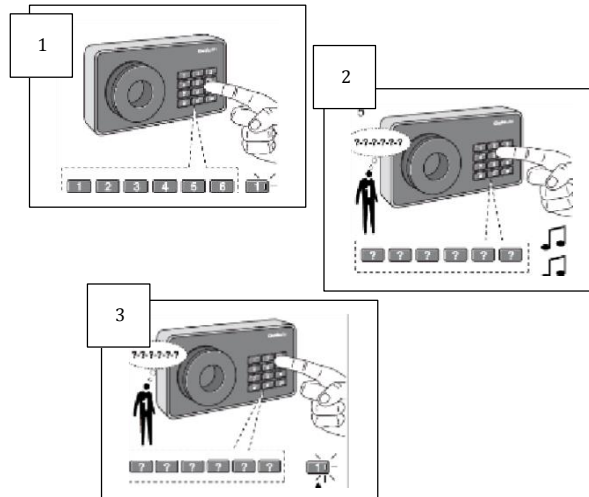


 1300 360 127

**SUPPLY
DELIVERY AND INSTALLATION
SERVICE AND REPAIR**

*City Safes has all of your security
requirements covered*

Setting up your own PIN code. – New PIN must contain 6 digits



1. Open the safe as per the instructions above leaving bolt work in the open position
To change your combination from factory setting you must have the door open with the bolt work in the open position. (flush with the door)
2. Press the Star * button, you will hear a single beep followed by the hash # button You will hear a single beep.
3. Enter the factory code of 1,2,3,4,5,6 & the number one (1) button will light up Green. (Diagram 1)
4. Enter your new 6 digit PIN number, you will hear two (2) beeps (diagram 2)
5. Entre your new 6 digit PIN number again, you will see the number One (1) button light up green.(diagram 3)
6. With the door still open check that your new PIN code has been accepted.
7. Operate the lock 5 times without closing the door to ensure the new PIN code has been accepted be sure to press the * button and then your new combo.
8. If unsure repeat the steps above.

SHOWROOM AND HEAD OFFICE

24 Garema Ct,
Kingsgrove, NSW 2208

Ph: (02) 9502 1014

Email: sales@citysafes.com.au

Web: www.citysafes.com.au